

Common Exception Word Activity Mat: parents

Find and circle the word **parents**.

past parents parents
past path past
parents path parents
path parents path

Highlight the word **parents** in these sentences.



His **parents** are fun.

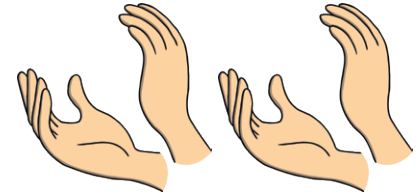
My **parents** won't mind.

Where are your **parents**?

Be polite to your **parents**.



Clap the word **parents**.



Finish off the word **parents**.

par_ _ _ _	_ _ _ ents
_ _ _ _ ts	p_ _ _ _ _

Now write the full word.

Trace the word **parents**.

parents

parents

parents

Write the letters from the word **parents** inside the boxes.

--	--	--	--	--	--	--

Add the word **parents** to these sentences.



Tom's _____ both work in a restaurant.

My _____ told me they met at a party when they were young.

I miss my _____.



Common Exception Word Activity Mat: break

Find and circle the word **break**.

busy both break both busy
both busy break
break both busy
who break busy

Highlight the word **break** in these sentences.



It is time for a break.

How did you break your arm?

Break time is finished.

I would like a break.



Clap the word **break**.



Finish off the word **break**.

br _ _ _	_ _ _ ak
_ _ _ _ k	b _ _ _ _

Now write the full word.

Trace the word **break**.

break

break

break

Write the letters from the word **break** inside the boxes.

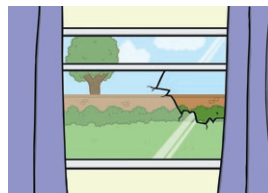
--	--	--	--	--

Add the word **break** to these sentences.

How did you _____ the window?

I dropped the vase but it didn't _____ !

Can we have a _____ ?



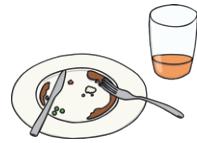
Common Exception Word Activity Mat: steak

Find and circle the word **steak**.

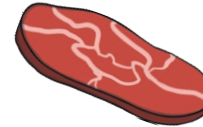
sure whole who
steak whole sure
where when sure
who steak sure

Highlight the word **steak** in these sentences.

I like to eat steak for dinner on a Friday.



Is the steak ready.



This steak looks great!

Clap the word **steak**.



Finish off the word **steak**.

st _ _ _	_ _ _eak
_ _ _ _ _k	s _ _ _ _ _

Now write the full word.

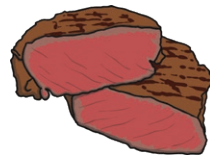
Trace the word **steak**.

steak

steak

steak

Add the word **steak** to these sentences.



The _____ was very juicy.

How do you like your _____ to be cooked?

We don't eat _____ very often.



Common Exception Word Activity Mat: children

Find and circle the word **children**.

climb children class
children class clmb
class children
climb class class
children children climb

Highlight the word **children** in these sentences.

Most children love eating ice cream.

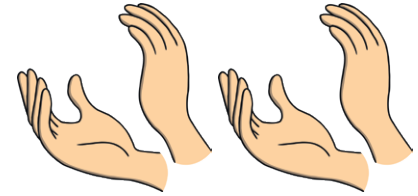


Where are the children?

How many children are in your class?



Clap the word **children**.



Finish off the word **children**.

child_ _ _	_ _ _ dren
_ _ _ _ en	c _ _ _ _

Now write the full word.

Trace the word **children**.

children

children

children

Add the word **children** to these sentences.

We saw lots of _____ playing rugby at the park.

She has three _____.

I took the _____ to school.



